

# Welcome - Fáilte

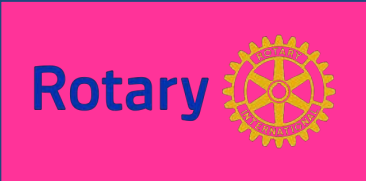
## Induction Information for new Students & Parents



St. Louis Secondary School  
Tuesday 5th December 2023



# School of Distinction



# School of Distinction



# Home School Community Liaison: Ms Meehan



# School Completion Project: Ms Aoife Gonnely



# Additional Needs Coordinator Ms J Mallon & SNA team 2024



# Claire McCourt & Leah Kennedy



# Guidance: Ms Mee & Ms O'Meara





# What we do at St.Louis



We assist and encourage students to work towards achieving their potential by making informed choices about their lives in all respects – Personal, Social, Educational and Vocational.

We also provide sensitive care and support to students when faced with life's transitions and challenges.





We offer students both one-to-one counselling support and careers advice.

We operate an open- door policy throughout the academic year.

Students can request an appointment with the Guidance Counsellor at any stage throughout the school year.





# TRANSITION TO SECONDARY SCHOOL



**1.RECOGNITION OF LEVEL OF ADJUSTMENT REQUIRED.**

**2.CAIRDE TEAM-MENTORING, PEER SUPPORT.**

**3.STRUCTURED LUNCHTIME ACTIVITIES TO PROMOTE BONDING AND SENSE OF BELONGING.**

# Settling in....



# **Ms Mary Gilmore Deputy Principal**



# What will we know about you?

- Medical Information
- SEN Information
- Family Circumstances
- Subject Options - early 2024
- Friends from Primary School
- STEN score from primary school
- Info from Passports re. attendance & achievements
- Visiting 6<sup>th</sup> class teachers/principals



# General Data Protection Regulations

- We have had training to raise our awareness of our responsibilities to uphold the rights of your data and that of your children – info, videos, images etc
- We are always updating policies around use, processing, storage and consent when requesting information from you as parents.
- You will be asked to sign a number of consent forms to ensure we are compliant with GDPR via the App
- CCTV in most areas of the school- security /trespassing

# CAT4

*Cognitive Abilities Test (CAT) is a suite of tests that assesses a student's reasoning (thinking) abilities in key areas that support educational development and academic attainment*

**We use this information to help you learn and grow to the best of your ability.**



Use of CAT4 test info and what it can tell us about each girl's ability at that moment-

- **Verbal Reasoning– thinking with words**
- **Quantitative (or Numerical) Reasoning – thinking with numbers**
- **Non-verbal Reasoning – thinking with shapes**
- **Spatial Ability – thinking with shape and space**



## We know that Intelligence is NOT fixed - High Expectations

- Intelligence is not fixed - the assessment is not a label, only a guide for Teachers and we expect to measure progress from this starting point.
- Streaming or setting is not a feature of First Year.
- Mixed ability, differentiation by resources and expected outcomes
- Learning Support / Resource / Extension work/  
Co-teaching/ Use of Inclusion Assistants
- Principal monitors academic progress

# Key Message of Junior Cycle

'to deliver Junior Cycle provision that places the needs of the students at the core of teaching and learning'



# Principles for Junior Cycle

Continuity  
and  
Development

Creativity  
and  
Innovation

Inclusive  
Education

Wellbeing

Choice and  
Flexibility

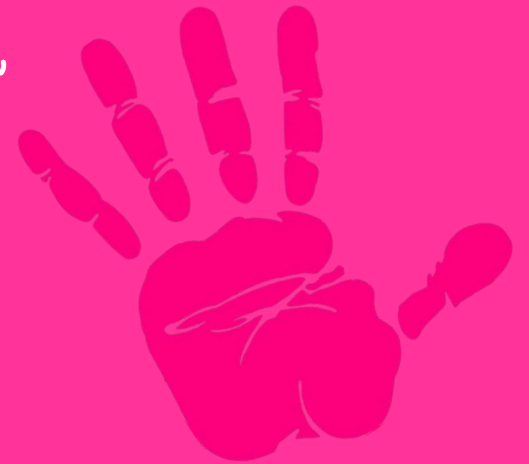
Quality

Engagement  
and  
Participation

Learning to  
learn

“Junior cycle places **students** at the **centre** of the educational experience, enabling them to **actively participate** in their communities and in society and to be **resourceful and confident learners** in all aspects and stages of their lives.”

Framework for Junior Cycle , 2015



# Assessment approaches in Junior Cycle

...The purpose of assessment, at this stage of education, is to support learning...

## Assessment for Learning

# JUNIOR CYCLE GRADING

## Descriptors

### State Examinations

- Distinction
- Higher Merit
- Merit
- Achieved
- Partially Achieved
- Not Graded

### Classroom-Based Assessments

- Exceptional
- Above expectations
- In line with expectations
- Yet to meet expectations



# The Final Assessment

## Summer of 3<sup>rd</sup> Year

'It will be important to see the state-certified examination as **one element of a balanced, broader approach to assessment**'

All aspects of assessment will contribute to providing a **comprehensive** picture of student achievement which will be captured in the JCPA\*

\*Junior Cycle Profile of Achievement



# Michelle Dolan Principal





**“Wellbeing in Junior Cycle is about young people feeling confident, happy, healthy and connected”.**





# Wellbeing

Student wellbeing is present when the students realise their abilities, take care of their physical wellbeing, can cope with the normal stresses of life, and have a sense of purpose and belonging to a wider community.

# St Louis Curriculum – 1<sup>st</sup> Yr 2024-2025

- **ENGLISH IRISH MATHS - 3 hours per week**
- **All other for 2 hours:**
- **History, Geography, Religion, Business & Music**
- **1 Modern Foreign Language**
- **Science, Technology, Art, Home Economics**

**CHOOSE 2**

11 SUBJECTS only 10 MAX for Junior Cycle

SPHE, CSPE, PE - WELLBEING SUBJECTS

# St Louis Curriculum – Current 2<sup>nd</sup> Yr

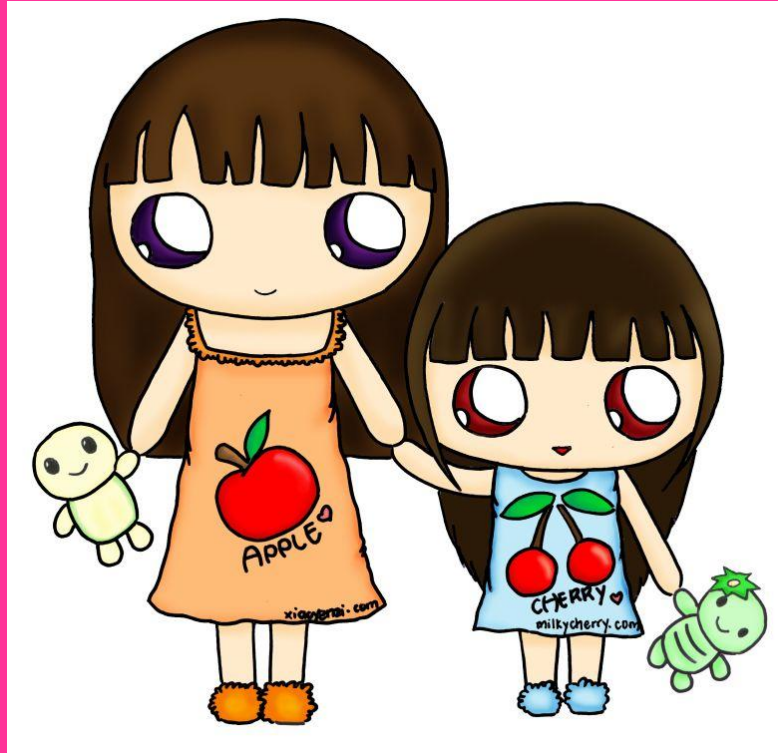
- **10 examinable subjects**
- **Wellbeing - 400 hours over 3 years**
- **Continue to study PE, SPHE CSPE**

**Philosophy- 4Cs Critical, Caring Collaborative, Creative**

**Digital Media Literacy skills & ethics**

**Music / Choir for Wellbeing & Guidance Ed**

# Cairde Team- Big Sisters / Mentors



My religion is  
very simple.  
My religion is  
**kindness.**

*-Dalai Lama*



# Transition from Primary School-Wellbeing





# Transition from Primary School

**LUNCHTIME ACTIVITIES TO  
DEVELOP NEW INTERESTS &  
BONDS FOR 1ST YEARS ONLY:**

TOURS OF THE SCHOOL

CAIRDE DROP-OFF / PICK UP

QUIZZES

TREASURE HUNTS

MOVIES

MINDFULNESS



# Extra-Curricular Activities

- DANCE DEBATING WRITING COMPETITIONS
- PUBLIC SPEAKING CAMOGIE CHESS
- GOLF RUGBY
- BADMINTON GAELIC
- VOLLEYBALL SOCCER
- DODGEBALL
- TRAMPOLINING
- FITNESS TRAINING
- CHOIR ATHLETICS
- INSTRUMENTAL GROUPS



# St Louis - a diverse, inclusive community

Over 40 different nationalities  
& many languages.

We encourage respect, discussion &  
co-operation around views on religious practice  
/ culture or concerns about curriculum content

All needs are met and talents celebrated









# St Louis & its Catholic Ethos

The Sisters of St. Louis are a religious community who were founded in post-revolutionary France in 1842 in Juilly outside Paris ....

The founder of the order, Louis Marie Eugene Bautain, was guided by Christ's prayer,  
Ut Sint Unum : " That they may all be one".

# St Louis & its Catholic Ethos

His vision of a world healed, unified and transformed motivates the order to respond to the social, educational and spiritual needs of the time.

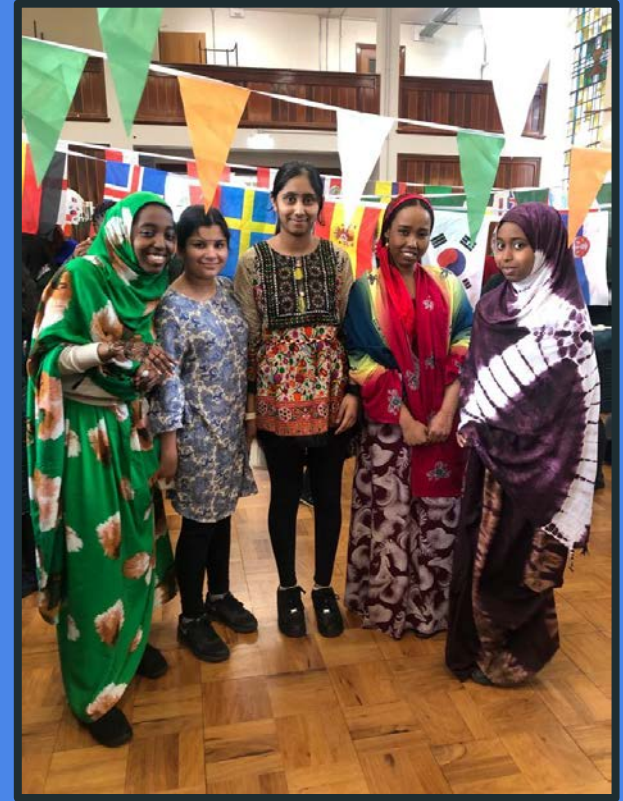
The Ethos is very much about celebrating the Catholic faith in **a spirit of openness and respect for others.**

You are welcome to join Mass or other Liturgies but it's not compulsory

# All welcome to our Liturgies & Masses

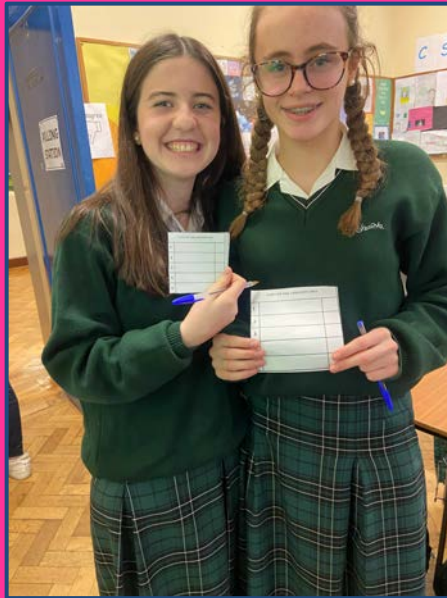


# Annual Multi-cultural events to celebrate our diversity & inclusivity



# Our Code of Behaviour

This is a contract drawn up and signed by each party: School, Parents & Students to support the school as a safe and happy learning environment.



# Our Code of Behaviour

Students & Parents:

It is important that you read it fully and accept that you are agreeing to its conditions when you join the school community.

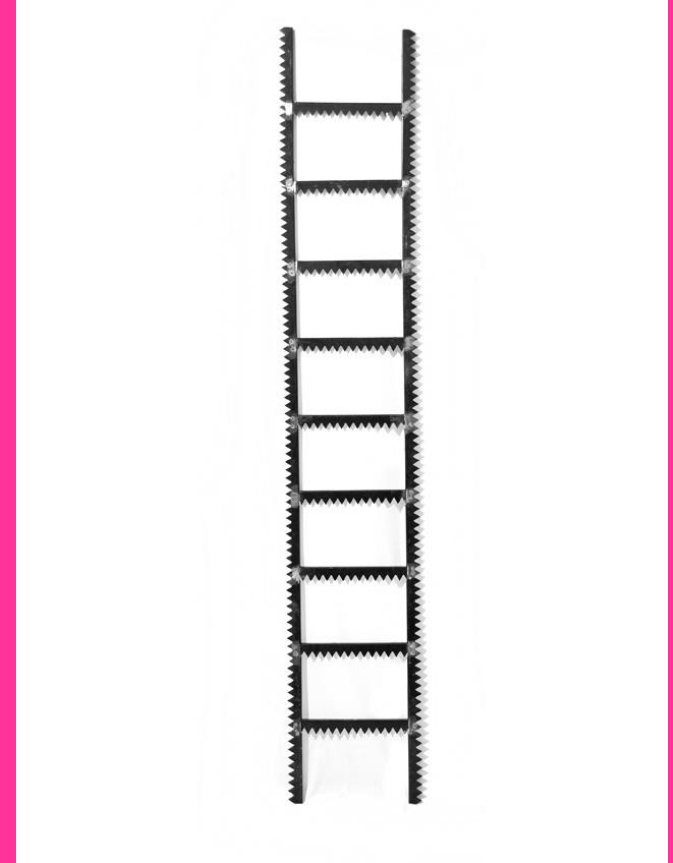


## Restorative Questions

1. What happened?
2. What were you thinking of at the time?
3. What have you thought about it since?
4. Who has been affected and in what way?
5. How could things have been done differently?
6. What do you think needs to happen next?

# Ladder of Referral

- Board of Management
- Principal
- Deputy Principal
- Year Head
- Class Teacher
- Class Leader-Student Council
- Deputy Class Leader





# Distributed Leadership

- Team of assistant principals supporting the senior management team
- The needs of school are reviewed every 2 years and the work is distributed to assistant principals in line with these priorities.
- Student Voice promoted through Student Council and consultation on school life

# BoM October 2021-2024

- Chair of the Board - MS Vera O'Brien
- Sr. Maureen McShane - St Louis Sisters
- Mr John McCarthy
- Mr Tim Ahern
- Mrs Geraldine Kirk - parent nominee
- Mr Oliver Lawrence - parent nominee
- Ms Anne Marie Kirk      Ms Joanne Mallon

# Use of Smartphones



Junior Students are not permitted access to mobile phones from 8:50- 3.50

Offer a service in the main office to keep phones secure until they are collected

All Students are **not permitted to phone or text home without speaking to a member of staff.**

Confiscated phones must be collected by parents.

# Use of Smartphones



Using a phone **outside class** is a serious breach of the Code of Behaviour – confiscation & detention

We need Parental Support to follow-through on the sanction.

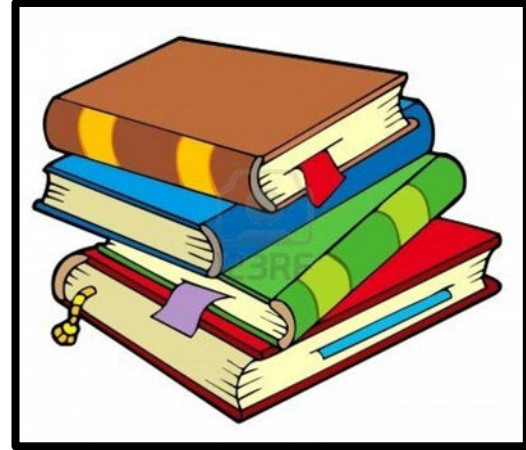
Videoing another student / Teacher – serious breach of privacy – very serious consequences...

Sharing images without consent also very serious

# Wi-fi



# Books or e books?

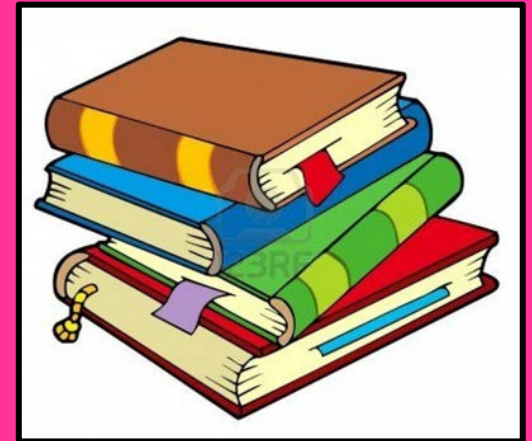


Book Grant € -extra funding from DEIS

Deadline before Easter 2024

Application Form online

[www.stlouisdundalk.ie](http://www.stlouisdundalk.ie)



# Accelerated Reader Programme

1st Year students will be encouraged to read more often and more challenging books.

Points awarded for meeting the challenge and moving on to the next level.



Teachers and parents can monitor progress online and encourage more reading and less screen time!





# School Week

New Junior Cycle demands new ways of teaching.

**We have 1 hour classes.** Allows for more active learning, more group work and skills development.

**Half day finish at 1.05 every Wednesday.**

**Safe Routes to School - funding to upgrade infrastructure outside the school gate -**



# Attendance - EWB

Those who have full attendance are more successful than those who miss days! Post -primary school year = 166 days

**60,000 students miss school in Ireland every day**

Communication is required to explain why a student has been absent or to explain why a student must leave early - this is discouraged- **please avoid dentist & doctor appointments during the school day, if at all possible.**

20+ days missed - the names of students must be forwarded to the Education Welfare Board and you will be contacted by authorities.

# St Louis App

Use the St Louis App to communicate when students are running late, need to leave early for essential appointments or missed days due to illness etc.

Absentee form to explain absence

Late note

Permission to leave- still must be collected at the reception

Note from parent - other issues directly to Teacher or other

Other options: Pay subject fees- no cash,

read news and updates, calendar , direct messages from key staff

# Participation - PE

Notes required to explain why a student cannot participate in PE - concerns about fitness & health - please encourage full participation.

Active, Healthy Living is very Important here in the school



# Uniform & Appearance

The uniform is, in general, worn by all students to a high standard.

**Coats, scarves, hoodies and hair-bands / headbands are confiscated if they do not reflect the correct uniform policy**

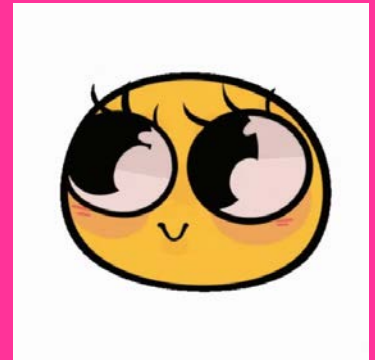
Jewellery & make-up rules are clearly stated- **extra jewellery is confiscated, makeup is removed.**

We encourage lots of walking & there are a lot of stairs so..

Good quality supportive black school shoes- No white on shoes / no canvas trainers please.

No makeup or fake tan or lashes- lovely for the weekend but not necessary for school.

Long nails are dangerous in P.E & practical subjects.



# Uniform 2024

## Green school jacket: forest green Hunter “Lucy” fitted coat with silver trim

- Skirt: plaid mid-calf length skirt
- **Green school trousers** - available The Factory Shop
- Green jumper with Dún Lughaidh logo
- White open necked girls’ blouse x 2
- Plain green knee socks or plain green tight
- Flat, all-black, leather shoes that can be laced
- Plain black or green head scarf
- Plain black or green neck scarf





# PE Uniform

P.E. uniform: available in Mc Evoy's, Michael Lynches and The Factory Shop

Uniform Policy reviewed Nov/Dec 2021

- Navy tracksuit bottoms with St Louis crest;
- Navy & Green St Louis crest sport t-shirt
- Navy & Green St Louis Crewneck top
- All: white sport socks; runners with white soles & a P.E. bag.
- Existing half-zip tracksuit pre 2020 / 2021 also acceptable until stocks run out

Uniform Policy reviewed Nov/Dec 21

# PE Uniform 2024

  
HUNTER  

---

SPORTS

ST. LOUIS DUNDALK



# PE Uniform 2024

  
HUNTER  
SPORTS

ST. LOUIS DUNDALK



# PE Uniform 2024

  
HUNTER  
SPORTS



ST. LOUIS DUNDALK





# Canteen- Get Fresh

Homemade food  
to buy at 11 & 1-  
reduced cost



Subsidised  
DEIS  
70 c  
€1.60 =  
€10 per  
week

# Cashless Canteen Card

Top up at home - contactless payment in school

Parents can oversee spending at breaks.

Promotes healthy eating in school

- avoids trip to shops for junk food on the way to school or the way home.

# Home Base Rooms

Students use their base classrooms before school, at break and at lunch until 12.50 as a place to socialise and eat.

Students can bring a packed lunch if they prefer that option.

A rota is employed to keep rooms neat & clean

# Climate Change

## Managing Waste & Sustainability





# Buses & Transport

All students enter the school through the Fatima Gate.  
Please walk or cycle to school if you live close to the school- new bike park at Fatima Gate.

If a student requires to be dropped off as a result of illness or injury then special permission & a pass is available to allow a car enter the site through the main gate- it is very busy area with over 100 staff driving into the two schools before 8:50

# School Transport Scheme

Under the terms of the Post-Primary School Transport Scheme, children are eligible for school transport where they reside not less than 4.8 kilometres from and are attending their nearest school as determined by the Department/Bus Éireann, having regard to ethos and language.

While it is the prerogative of parents to send their children to the school of their choice, eligibility for school transport is to the nearest school / Post Primary Centre and it is important that parents are aware of this eligibility criteria. Applications for school transport can be made online at [www.buseireann.ie/schooltransport](http://www.buseireann.ie/schooltransport) and must be submitted before the last Friday in April .

# What will you do on your first day?

## Last week of August 2024

- Meet your Year Head & fellow first years
- First Year Assembly
- Meet Head Girl & Deputy Head Girl
- Meet Cairde Team & tour the school
- Receive timetable, meet Class Teacher, visit base classroom
- Review & home
- Classes arranged very carefully - transfer data & mix of ability etc